

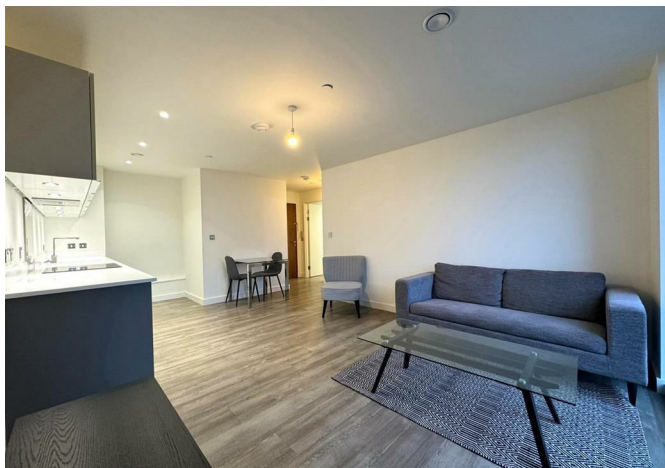


**BRICK**  
MANAGEMENT + LETTINGS

119 The Bank Two 58 Sheepcote Street, Birmingham, B16 8WL

**£1,100 Per month**





## 119 The Bank Two 58 Sheepcote Street, Birmingham, B16 8WL

**£1,100 Per month**

New to the market, this impressive eighteenth floor one bedroom apartment is located in The Bank, a popular residential development in Sheepcote Street.

The property benefits from a large open plan living area with city views, stylish fitted kitchen with integrated appliances, large carpeted double bedroom and luxury bathroom with bath and shower.

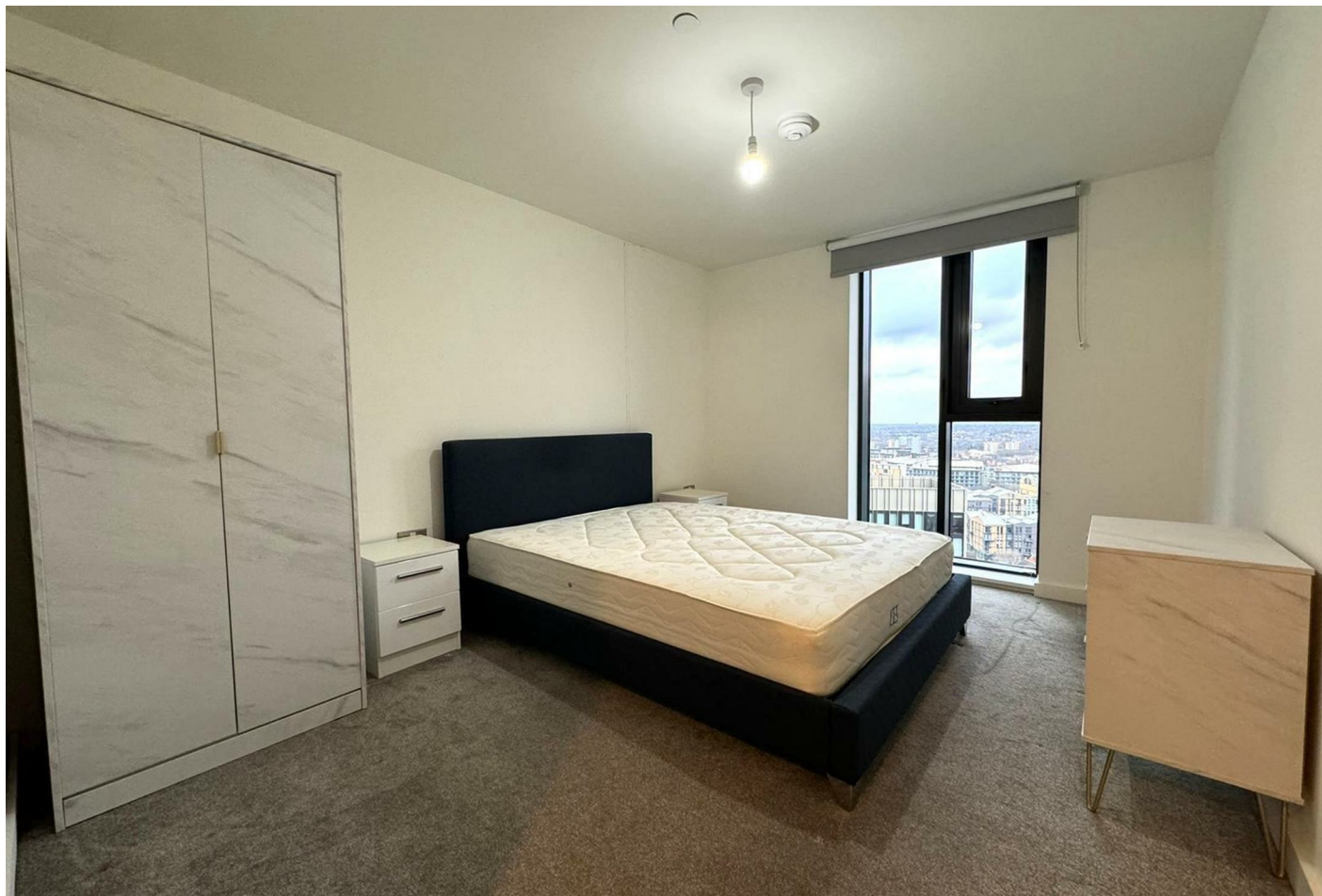
Offered on a furnished basis, with neutral decoration throughout and secure entry-phone access.

Residents have access to an on site concierge service, residents lounge and coffee bar, shared dining space, private gymnasium and on site bike storage facility.

The Bank is walking distance from Birmingham city centre and New Street station. Local amenities include a cinema, multiple restaurants, bars and local shops, plus gymnasium.

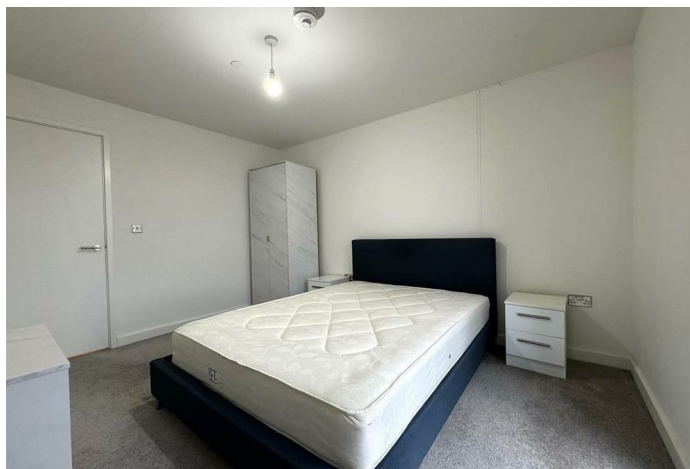
\* Sorry, no allocated parking with this property \*

## Description



## Situation

Furnished  
Council Tax Band: C  
Available: 31st January 2026

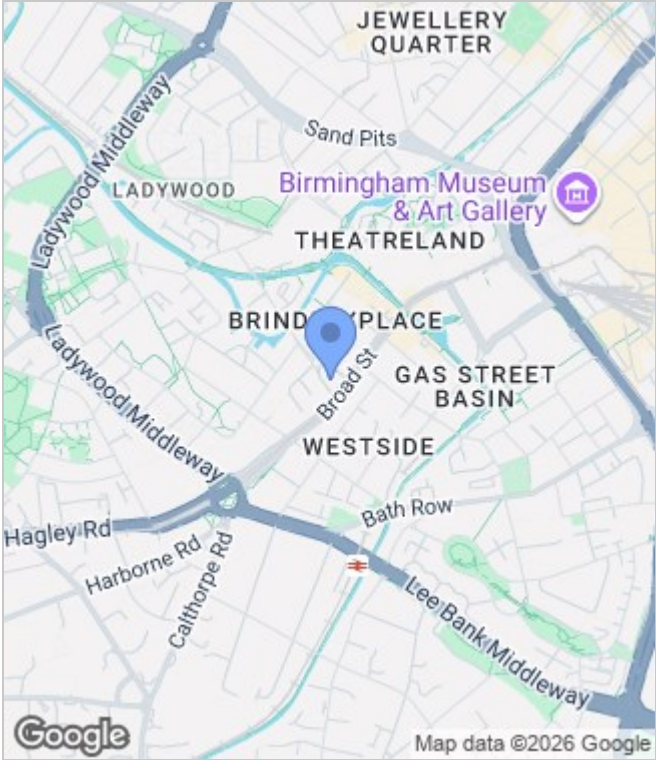




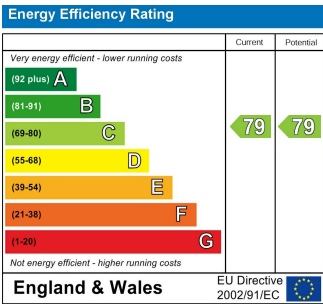
Floor Plans



Area Map



Energy Performance Graph



These particulars, whilst believed to be accurate are set out as a general outline only for guidance and do not constitute any part of an offer or contract. Intending purchasers should not rely on them as statements of representation of fact, but must satisfy themselves by inspection or otherwise as to their accuracy. No person in this firms employment has the authority to make or give any representation or warranty in respect of the property.